

**Trina**solar



# **TRINA SOLAR USER MANUAL**

VERTEX SERIES MODULES

## APPLICABLE MODULE TYPE

| Module type         | Module code    |
|---------------------|----------------|
| Monofacial products | DE09           |
|                     | DE09.05        |
|                     | DE09.08        |
|                     | DE18M(II)      |
|                     | DE18M.08(II)   |
|                     | DE19           |
|                     | DE20           |
|                     | DE21           |
| Bifacial products   | DEG18MC.20(II) |
|                     | DEG19C.20      |
|                     | DEG20C.20      |
|                     | DEG21C.20      |

## Table of Contents

|       |   |    |
|-------|---|----|
| 1     | INTRODUCTION .....                          | 1  |
| 2     | SAFETY PRECAUTIONS.....                     | 1  |
| 3     | SITE SELECTION AND ANGLE.....               | 3  |
| 4     | UNLOAD/TRANSPORTATION/STORAGE .....         | 4  |
| 5     | UNPACKING INTRODUCTION .....                | 7  |
| 5.1   | UNPACKING SAFETY.....                       | 7  |
| 5.2   | UNPACKING STEPS.....                        | 9  |
| 6     | INSTALLATION .....                          | 11 |
| 6.1   | INSTALLATION SAFETY .....                   | 11 |
| 6.2   | INSTALLATION METHOD.....                    | 13 |
| 6.2.1 | SCREW INSTALLATION .....                    | 13 |
| 6.2.2 | CLAMP INSTALLATION .....                    | 14 |
| 6.2.3 | SINGLE-AXIS INSTALLATION .....              | 18 |
| 6.3   | GROUNDING .....                             | 19 |
| 6.4   | ELECTRICAL INSTALLATION.....                | 20 |
| 6.4.1 | SAFETY INSTRUCTION .....                    | 20 |
| 6.4.2 | WIRING .....                                | 21 |
| 6.4.3 | FUSING.....                                 | 22 |
| 7     | PV MODULE MAINTENANCE .....                 | 23 |
| 7.1   | VISUAL INSPECTION AND REPLACEMENT.....      | 23 |
| 7.2   | CONNECTOR AND CABLE INSPECTION .....        | 23 |
| 7.3   | CLEANING .....                              | 24 |
| 8     | REPORTING TECHNICAL ISSUES AND CLAIMS ..... | 26 |

# 1 INTRODUCTION

First, thank you for choosing our products. This manual shall only apply to the installation, maintenance and use of the 210 Vertex series solar modules manufactured by Trina Solar Co., Ltd. (hereinafter referred to as "Trina Solar"). Failure to follow these safety instructions may result in personal injury or property damage.

The installation and operation of solar modules requires specialized skills and should only be performed by professionals. Please read the "Safety and Installation Instructions" carefully before using and operating the modules. The installer must inform the end customers (or consumers) of the above matters accordingly.

The term "Module" or "PV Module" in this manual refers to one or more 210 Vertex series solar modules. Please retain this manual for future reference.

## DISCLAIMER

Trina Solar reserves the rights to change this User Manual without noticing in advance. This manual is not a warranty document and does not have any warranty meaning. Failure of the customers to follow the requirements outlined in this manual during the installation of the module will result in the invalidity of product's limited warranty. Trina Solar is not responsible for any damage of any kind, including but not limited to any physical damage, injury or property loss resulting from module operation, improper system installation and failure to follow the instructions in the manual.



### Warning

Otherwise, the product may be damaged or the user's personal safety may be endangered.



### Prohibition

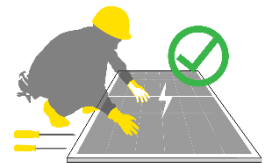
Otherwise, the product may be damaged or the user's personal safety may be endangered.

# 2 SAFETY PRECAUTIONS

## GENERAL SAFETY

Before attempting to install, wire, operate and maintain the modules, please read and understand all safety instructions. The module's solar cell will generate direct current (DC) when it is exposed to direct sunlight or other light sources, and direct contact with electricity live parts of the module, such as terminals, can result in injury or death, irrespective of whether or not the module and the other electrical equipment are connected.

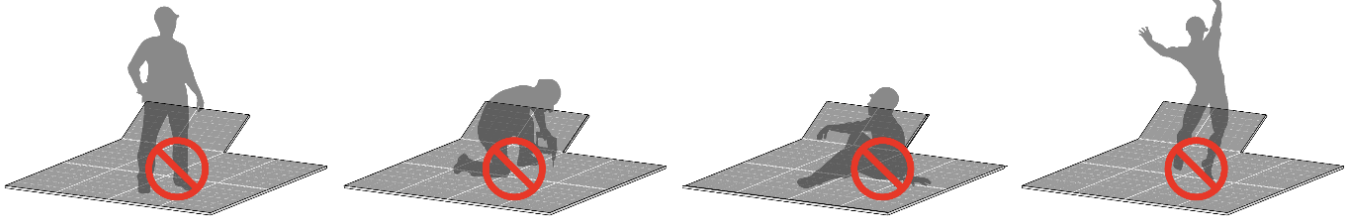
Regardless of whether the PV module is connected to the system or not, when conducting such as installation, grounding, wiring, or cleaning work, appropriate protective equipment such as insulation tools, hard hats, insulated gloves, safety belts and safety insulated shoes should always be used to avoid direct contact with the modules, reduce the risk of electric shock and protect your hands from sharp edges.



Under normal conditions, a solar photovoltaic module is likely to experience conditions that produce more current and/or voltage than reported at standard test conditions. The requirement of National Electric Code (NEC) in Article 690 shall be following to address these increased outputs. In installation not under the requirement of the NEC, the values of Isc and Voc marked on this module should be multiplied by a factor of 1.25 when determining component voltage ratings, conductor current ratings, fuse sizes and size of controls connected to the PV output.



Do not stand, sit, walk, or jump directly on the module package or the module itself.



The PV module does not contain any serviceable parts. Do not disassemble or move any part of the module.

Do not damage or scratch the front- or backside surfaces of the module, as scratches may directly affect the product safety. If you detect any scratches or cuts on the module front- or backside, please do not use the module at all.

Do not put heavy objects or sharp objects on modules.

Do not pull, scratch or bend the output cables with force. Otherwise, the insulation part of the output cables will be damaged, leading to current leakage or electric shock.

Do not insert any conductive material into the connectors attached to the module.

Do not connect or disconnect the module when there is a current flow, or connected with any powered system.

Do not use water to extinguish fires when the module is connected to any powered system.

Do not artificially concentrate sunlight on the module.

Do not drop PV modules or allow objects to hit or fall directly on the modules.

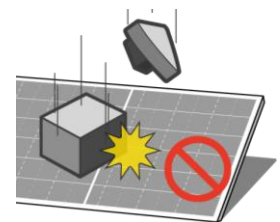
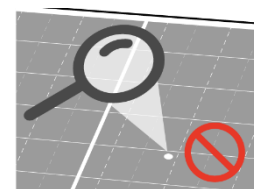
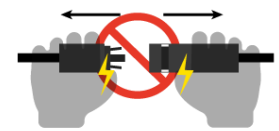
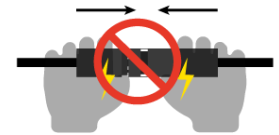
Do not carry modules on your head.

Do not carry modules with ropes.

Do not carry modules on your back.

During the normal operation of modules, they should not be blocked by buildings, trees, chimneys, etc. at any time of the day.

Keep the junction box cover closed at all times.



## FIRE SAFETY

When install modules on the rooftop, please refer to local laws and regulations before installation and abide by the requirements on building fire protection. The roof should be covered with a layer of fireproof materials with suitable fire protection rating and make sure that the backsheet and the mounting surface are fully ventilated. Different roof structures and installation methods will affect fireproof performance of buildings. Improper installation may lead to the risk of fire. Please use proper module accessories such as fuse, circuit breaker and grounding connector according to local regulations.



Do not install or use modules near open flames or flammable and explosive materials.

### 3 SITE SELECTION AND ANGLE

#### INSTALLATION ENVIRONMENT SELECTION

Trina Solar recommends that the module should be installed in a working environment with an ambient temperature of  $-20^{\circ}\text{C}$  to  $50^{\circ}\text{C}$ , but not exceed the temperature limit of  $-40^{\circ}\text{C}$  to  $85^{\circ}\text{C}$ .

The modules shall be installed in shadow-free areas throughout the year. Do not install the PV modules at a place where water damage may occur.

When installing solar modules on the rooftop, a safe working area must be left between the roof edge and the outer edge of the PV array.

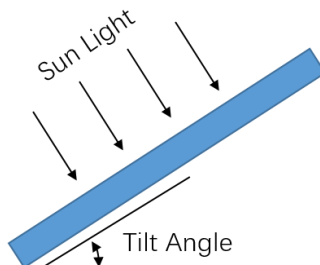
When stacking module on the rooftop, the rooftop should be tested for such loading and the installation plan must be developed in accordance with the specification requirements.

When using the modules in areas with high wind load and snow load, the supporting structure design should be carried out in strict accordance with the local design specifications, to ensure that the external load does not exceed the mechanical strength limit that the modules can withstand.

Salt spray corrosion tests conducted in accordance with IEC 61701 have shown that Trina Solar's PV modules can be installed near offshore or in the corrosive environment. However, the modules shall not be immersed in water or in a permanently wet environment (e.g., fountains, spindrift, etc.). There is a risk of corrosion if the module is placed in a salt spray (i.e., a marine environment) or in an environment containing sulfur (e.g., volcanoes, etc.).

In the place, 50~500 m away from the sea, stainless steel or aluminum materials need to be used in where contacting PV modules, and the installation position must be processed with anti-corrosion treatment. For detailed installation requirements, please refer to the *Trina Solar Coastal Application White Paper*, available from <https://www.trinasolar.com/en-glb/resources/downloads>.

#### INCLINATION SELECTION



The tilt angle of the PV module refers to the angle between the module and the horizontal ground. The tilt angle shall be selected according to the local conditions for different projects. Trina Solar recommends that the mounting tilt angle should not be less than  $10^{\circ}$ . For specific tilt angles, it shall be chosen in accordance with the local design procedures, specifications and regulations, or following the recommendations of the experienced PV module installers.

The PV modules is highly recommended facing south in the northern hemisphere and north in the southern hemisphere to get the best performance.

Following the local regulations, if PV modules are installed in North America and any other country or region comply to UL standard. A minimum of 155 mm (6.10 inch, recommended value) clearance shall be left between the PV module (backside) and the wall or roof surface. If other installation methods are used, the PV module's UL certification or fire class rating may get affected.

## 4 UNLOAD/TRANSPORTATION/STORAGE

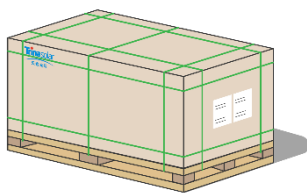
Please make sure to have sufficient safe distance during forklift operation to prevent people from standing or passing on both sides.

When unloading using a forklift, particular care should be taken to control the travel speed and prevent tilting during cornering.

In any circumstances, for vertical landscape packages, it shall not be stacked more than two layers; for vertical portrait packages, stacking is not allowed.

The working ground needs to ensure that the packaging box can be placed horizontally and steadily to avoid tipping.

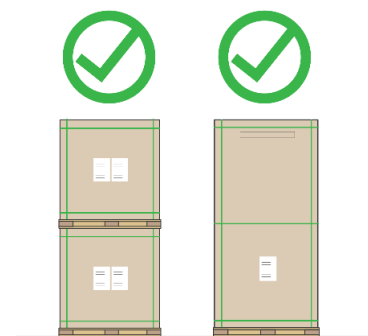
Example for vertical landscape package and vertical portrait package is shown as follows:



Vertical landscape package  
(short-side vertically placed)



Vertical portrait package  
(long-side vertically placed)



### UNLOADING

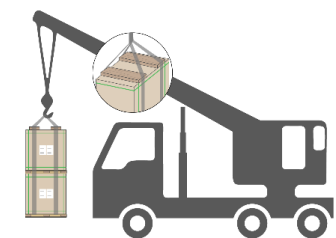
Upon arrival of the modules, please check the packaging box is in good condition, and check whether the module type and quantity on the outer packaging are consistent with the delivery order, if anything is wrong, please contact Trina Solar logistics and sales staff immediately.

#### 1. Unloading with a crane

When crane is used to unload the modules, please choose and use specialized tooling according to the weight and size of the module. Please adjust the position of the sling to keep the modules steady. To ensure the safety of the module, wooden sticks, boards or other fixtures of the same width as the outer packing cases should be used on the upper part of the box to prevent the sling from squeezing the pallet and damaging the modules. When placing the modules, do not lower the packing box too quickly and put it on a flat ground.



For vertical landscape packages, do not lift up more than TWO pallets of modules at once; for vertical portrait packages, do not lift up more than ONE pallet of modules at once.



Do not unload modules under the weather conditions of wind more than 6 class (in Beaufort scale), heavy rain or heavy snow.

#### 2. Unloading with a forklift

When using a forklift to unload the modules, please choose a suitable forklift according to weight. The forkprong should go into the pallet at least 3/4 of the pallet depth during unloading (the forkprong length  $H \geq 3/4$  of pallet length).

In order to ensure better stability during forklift transport, the forkprong width ( $W$ ) should be adjusted to the maximum position without any interference.

Please drive slowly and do not allow forks to hit the cartons or pallets. It is recommended to operate the forklift from the short side of the pallet and not touch the glass side. If the operation must be carried out on the glass side, please place buffer protection material (in yellow) in advance to prevent the inside modules being damaged due to the external force.

It is recommended to extend the height or width of the forklift backrest to prevent directing touch with the module glass.

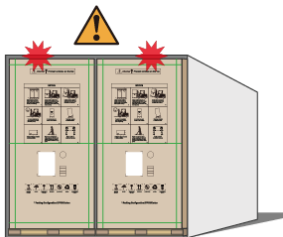


Since the packing box will block the sight of the forklift driver, it is recommended to drive backwards during the forklift, and arrange for special supervision and command to prevent bumping into people or items causing personal injury or damage to the modules.

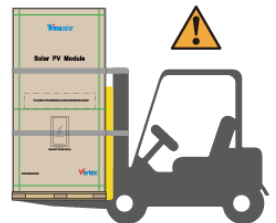
At the project site, the forklift should be driven at a controlled speed of  $\leq 5$  km/h in straight, and  $\leq 3$  km/h for turning.

The loading dock should be as the same height as the underside of the carrier.

Please also pay attention to the following precautions when unloading (taking vertical portrait packages as an example).



Prevent collision on the top when unloading from the container.



Recommend to secure the module package to the forklift with a belt, transport horizontally with no person standing on either side.



Control the speed to prevent tipping.



No collision on the module glass.



No tilting storage.

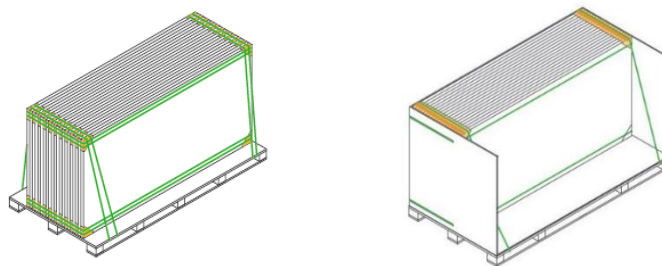


## SECONDARY TRANSPORTATION

The packaged modules can be transported by land, sea or air. During transportation, make sure that the package is fixed with packing belts securely on the shipping platform without any movement.

If the unpacked modules need to be transported to other places, it is recommended to pack the single module together in a package to the maximum number allowed, and fixed with inner packing belts (2100N force recommended). Finally, cover it with the packaging carton box and fix it with the same number of packing belts as before.

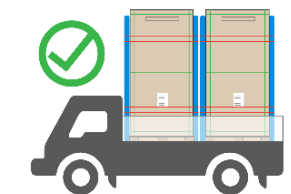
If the number of modules need to be packed is less than the maximum number allowed in a package, the modules need to be fixed and secured to the center of the pallet for utility packaging (the following figure to the left) or on the side for distribution packaging (the following figure to the right), and fixed with inner packing belts (2100N force recommended). Finally, cover it with the packaging carton box and fix it with the same number of packing belts as before. Do not put the unfulfilled package on the lower layer when transported.



Please use appropriate means of transport to transport the modules. Do not use pedicab to transport or handle the modules.

Secondary transport is not allowed for the monofacial modules that are packaged horizontally.

There is no stacking of pallets allowed (for both vertical landscape and vertical portrait packages), when transporting with small trucks. Please fix the package to the vehicle using e.g. ropes and control the driving speed according to the road conditions.



When using box trucker and flatbed trucker transport the modules, the module packages should be placed close to each other without any gap. The empty space needs to be filled to prevent the package moving backwards to the rear of the truck. Additionally, the package needs to be fixed using e.g. ropes to the vehicle when transporting with the flatbed trucker.

Do not allow pallets to exceed the loading area of the transport vehicle.

## STORAGE

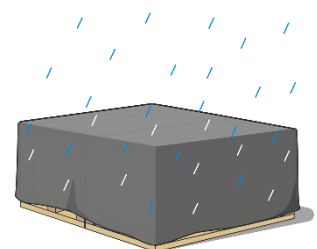
Modules should be stored in a dry and ventilated environment on a flat ground, to avoid damage or dumping of the modules due to ground deformation or collapse.

Storage requirements: relative humidity < 85% and temperature range of -40°C to 50°C.



Do not remove the original package and keep the wrapping film and carton box in a good condition, if the modules require long-distance transport or long-term storage.

For long-term storage, it is recommended to store the modules in a standard warehouse with regular inspection, and under confirming of your personal safety, reinforce the package in a timely manner if any anomalies are found.



The warehouse shelves should have sufficient carrying capacity and storage space, regular inspection is required to ensure the storage safety.

If you need to store the modules in the project site, do not choose soft ground and the ground that is easy to collapse, should choose a hard ground or a higher ground with flat surface to ensure the module packages not collapsing and tilting for long-term storage.

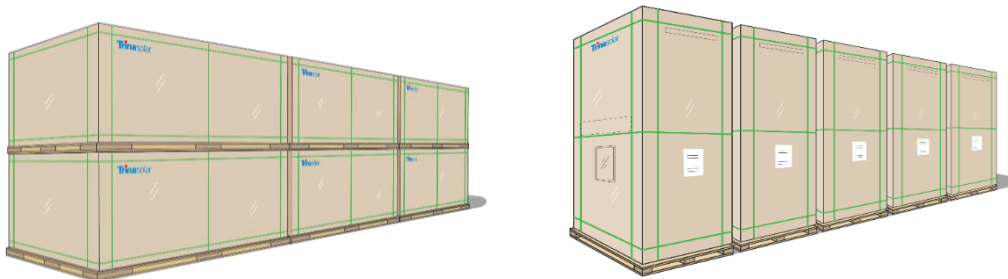
In rainy weather, please fully cover the modules and pallets with a rain protection and take moisture-proof measures on pallets and cartons to prevent collapse and moisture ingress. Under sun or wind, remove the rain cloth to allow the package to dry as soon as possible, prevent package collapse caused by the rain.

Do not allow the pallets to soak in rain water leading to mold and decay. The ground drainage measures should be done first to prevent a large amount of water accumulation on the ground after rain, causing the ground to soften, sink, etc.

Do not allow unauthorized persons to access the module storage area.

Do not leave modules unsupported or unsecured.

The modules should be centrally stored with pallet spacing within 10 cm.



## 5 UNPACKING INTRODUCTION

### 5.1 UNPACKING SAFETY

Before unpacking, please check the product type, power bins, serial number and relevant suggestions on the A4 paper of the packaging box, and read the unpacking instructions carefully. Custom unpacking methods are prohibited.

Before unpacking, please make sure that the packaging box is in good condition, it is recommended to use art knife to remove the packing belt and wrapping film. Violent removal is prohibited to avoid scratching the modules in the box.

Please check that the number of modules in the box and the barcode information on the module frame are consistent with the information on the A4 paper on the packaging box.

Please follow the recommended unpacking steps to unpack the modules. When unpacking, it must be operated by two or more people at the same time. Always wear insulating gloves when handling the modules.

If all the modules are not taken out after unpacking, the remaining modules shall be placed horizontally and repackaged to prevent them from tipping. When packaging, please note that the glass side of the bottom module should face up, the glass side of the middle modules should face down, and the glass side of the top module should face up. Stacks of modules should contain no more than 16 modules, and the frames should be aligned.

For matters regarding the unpacking stand supporter, please contact Trina Solar sales.



In windy weather, it is recommended not to carry the modules, and the unpacked modules should be properly secured.

Do not unpack the modules outside under rain and snow conditions.

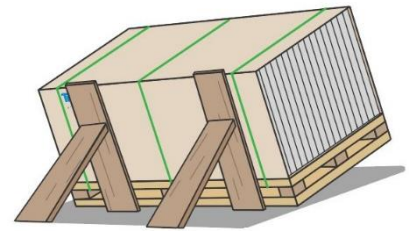
Do not carry the module by one person to prevent the module from slipping and hitting other modules, causing scratches, cracks, or deformation on the modules.

Do not lift modules by their cables or junction box.

Before removing the inner packing belts, please take measures to protect the modules from dumping.

The vertical portrait packages have a high center of gravity and are prohibited from unpacking on non-horizontal or soft grounds to avoid personal injury or even death.

If unpacking the vertical portrait packages on non-horizontal ground, anti-tilting measures should be taken as shown in the figure to the right.



Do not stand on the back of the stand supporter, if unpacking the modules packed with vertical portrait packaging method.

Do not stand on the pallet during unpacking, please carry the modules from sides of the pallet.

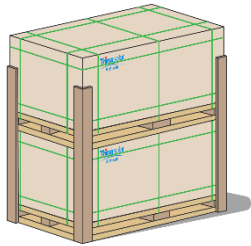
Do not move the stand supporter during unpacking to prevent the modules being tilted.

Do not lean the module on any instable objects, such as poles or mounting columns.

Do not support the back of the modules directly with materials such as wooden strips.

## 5.2 UNPACKING STEPS

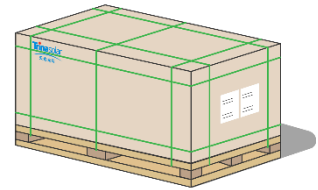
**Method A:** Unpacking from one side for DE18M(II) / DE18M.08(II) / DEG18MC.20(II) / DE19 / DEG19C.20 series modules with vertical landscape package.



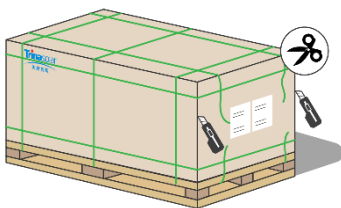
1) Place the carton box on a flat ground, then cut the packing belts. Start from step 3 if there are no plywood attached.



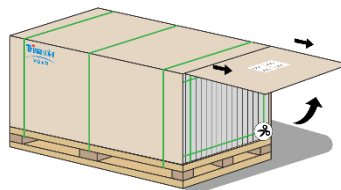
2) Remove the attached plywood.



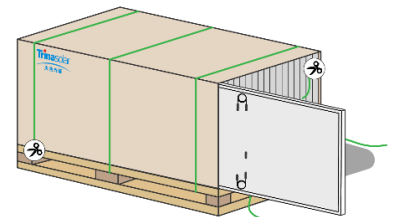
3) Prepare for unpacking (do not stack the module), unpacking instruction can be seen on the packing box.



4) Cut the two packing belts on the short side of the pallet, and cut the side carton in the vertical direction.

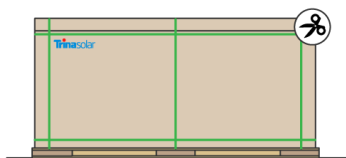


5) Cut off the short-side tape, lift the cardboard up 90°, and pull out the cardboard to expose the modules.

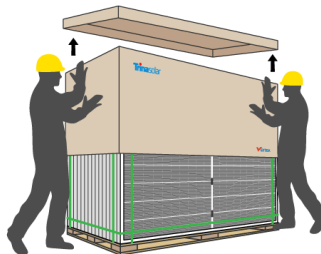


6) Cut the two horizontal packing belts inside the carton, and cut the two packing belts near the pallet. Take out the modules in turn and carry the module by two people.

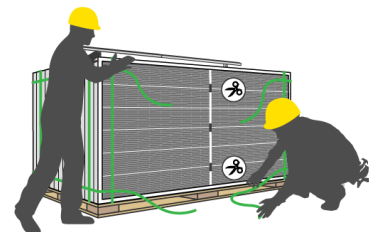
**Method B:** Unpacking for DE18M(II) / DE18M.08(II) / DEG18MC.20(II) / DE19 / DEG19C.20 series modules with vertical landscape package.



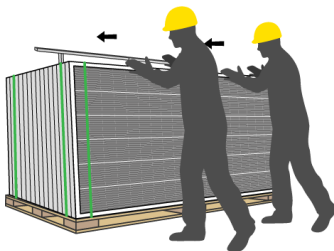
1) Remove the wrapping film and packing belts.



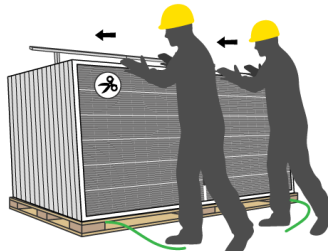
2) Remove the top cover and the cartons.



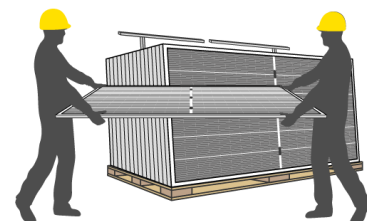
4) Cut off all the horizontal packing belts.



5) When there are 1-2 vertical packing belts remaining, push the module gently to tilt toward the stand supporter.



6) Cut off the remaining packing belts.

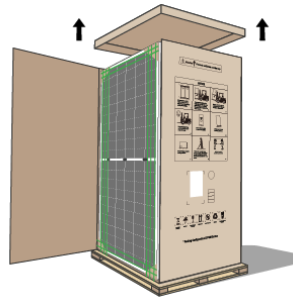


7) Take out the modules in order.

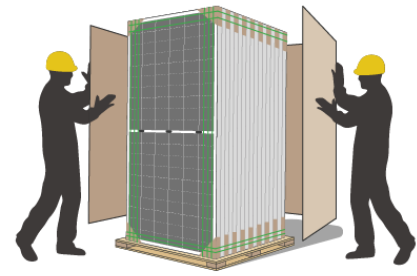
**Method C:** For DE20 / DE21 / DEG21C.20 series modules with vertical portrait package.



1) Remove the wrapping film and packing belts.



2) Remove the top cover and sealing tape.



3) Remove the carton box.



4) Place the stand supporter from the glass side.



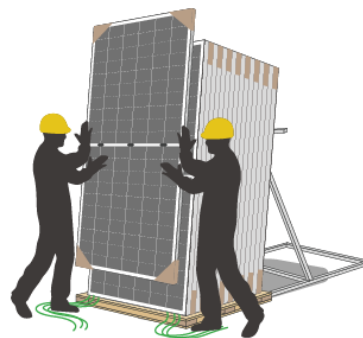
5) Cut off all the horizontal packing belts.



6) When there are 1-2 vertical packing belts remaining, push the module gently to tilt toward the stand supporter.

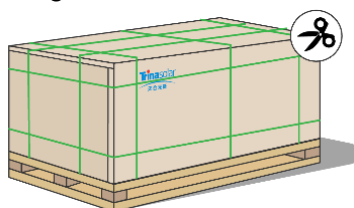


7) Cut off the remaining packing belts so that the modules rest on the stand supporter.

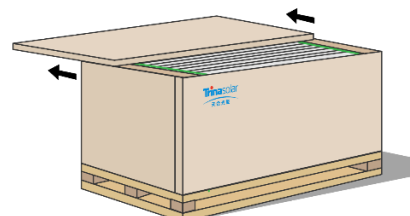


8) Take out the modules in order.

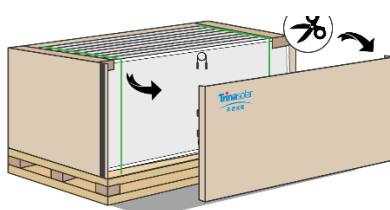
**Method D:** Unpacking from one side for DE09 / DE09.05 / DE09.08 series modules with vertical landscape package.



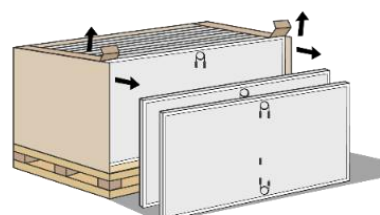
1) Cut all the packing belts and take out the wrapping film.



2) Remove the top cover.

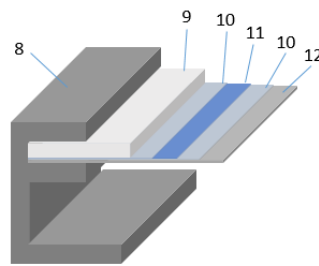
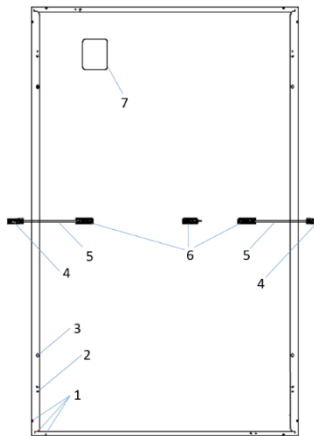


3) Remove the side cover.



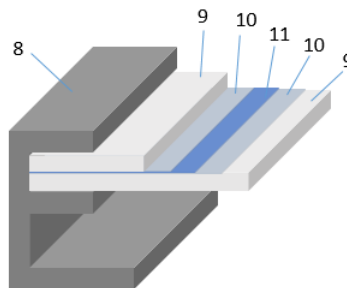
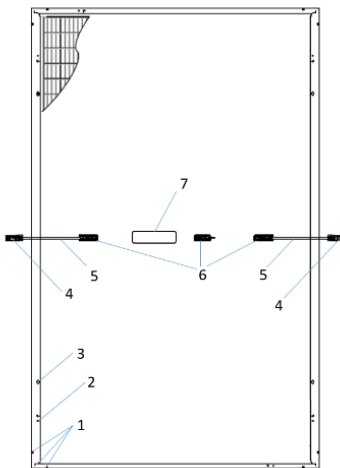
4) Take out the modules from one side.

## 6 INSTALLATION



- 1 Drain hole
- 2 Grounding hole
- 3 Installation hole
- 4 Connector
- 5 Cable
- 6 Junction box
- 7 Nameplate
- 8 Frame
- 9 Glass
- 10 Encapsulate material
- 11 Solar cell
- 12 Backsheet

Mechanical drawing for monofacial modules



Mechanical drawing for bifacial modules

### 6.1 INSTALLATION SAFETY

Trina Solar recommends that PV module installation should only be conducted by specialized persons with experience in PV system installation. All installation work must be in full compliance with the local regulations and the relevant international electrical standards.

The fire rating of Trina Solar modules complies with relevant standards or local laws and regulations.

Before installation, please carefully check the modules for abnormalities such as glass bursts, cell cracks, backsheet scratches, deformation of installation holes, broken junction boxes or missing covers, nameplates falling off or missing, and broken cables or connectors, etc. If any of such situation is found, please contact Trina Solar customer service in time.

Before installation, please keep modules' electrical components clean and dry. Connectors can corrode if they are in connected under wet conditions or with water inside the conductive parts. Any corroded components shall not be used.

The cable length of junction box shall be selected according to the installation mode. When wiring, the ties for fixing the cables coils shall be removed. The cable shall be fixed on the installation system (frame or bracket, guide rail) with UV resistant cable ties, in cable conduits or wire cards to avoid direct sunlight or immersion in water and mechanical damage of the cable; otherwise, it may cause accelerated aging of the cable or even leakage and fire. Bifacial PV modules should also avoid

blocking the solar cells on the back of the module. The open area should minimize arc coil, which can reduce the risk of induced lightning impact on PV module.



Do not install modules under rain, snow or windy conditions.

If installing or operate modules after rain or in the morning dew, appropriate protective measures need to be taken to prevent water vapor from penetrating into the connector.



Do not allow unauthorized persons to access the installation area.

When installing with scaffolding, make sure that the scaffolding is in a stable position or with anti-dumping measures, and that the installer should wear a safety belt in accordance with local building codes.

It is recommended not to stand on the bottom side of the inclined surface of the module during installation, to prevent the module from slipping and causing casualty.

Please keep the PV module packed in the carton until installation and install them immediately after unpacking.

Do not wear metallic jewelry which can cause electric shock during installation.

During installation and wiring of PV modules, please use opaque material to cover the PV module surface completely.

Installation work must be carried out by at least two persons.

Do not stand on the module glass while working. There is a risk of injury or electric shock if the glass is broken.

Do not loosen or unscrew the screws/clamps/rails of and around the PV module, which may lead to a reduction of the module's load rating and even fall off.

Do not drop any tools or other objects on the module front- or backside which could cause damage (visible or non-visible) to the module.

Do not install or use damaged modules. If the surface glass is damaged or worn, direct contact with the surface of the module may cause electric shock.

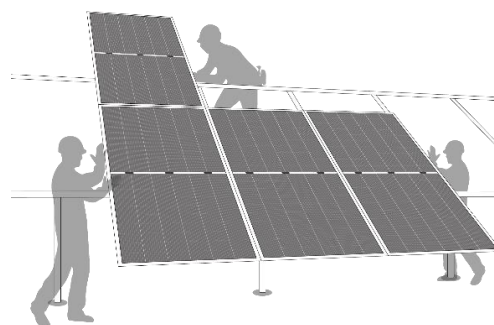
Do not damage the backsheet or glass of modules when fastening the modules to the bracket with bolts.

Do not drill additional holes on any part of the module. Doing so will void the warranty.

The drain holes on the module frame must not be blocked in any situation during the installation and operation.

Do not unplug the connector if the system circuit is connected to a load.

Modules with different colors should be avoided to install on the same rooftop or in the same array.



## 6.2 INSTALLATION METHOD

The PV modules must be installed in accordance with the installation instructions specified in this user manual to comply with the IEC certification. Before installing, please read this section carefully to familiarize yourself with the complete installation processes.

The modules and racking system can be connected through the mounting holes, clamps, or an embedded system. Installation of modules must be carried out in accordance with the installation requirements. If you wish to use a different installation method, please consult Trina Solar customer service or technical support team. If in such case that an alternative mounting method is used but not approved by Trina Solar, the module may get damaged and the warranty will be invalidated.

The mechanical loads described in this manual are the test loads. For calculating the equivalent maximum design loads, a safety factor of 1.5 needs to be considered in compliance with the requirements of the local laws and regulations. The design loads are strongly related to the construction, applied standards, location and local climate conditions; therefore, have to be determined by the racking suppliers and/or the professional engineers. For detailed information, please follow local structural code or contact your professional structural engineer.

The modules shall be mounted on continuous rails that extend beneath the modules. If modules are mounted without continuous rails, the maximum allowable load will be reduced, which needs to be re-evaluated by Trina Solar.

The minimum distance between two modules is 5 mm (0.2 inch). If using special trackers, the minimum distance should be selected according to the technical requirements of the tracker suppliers.

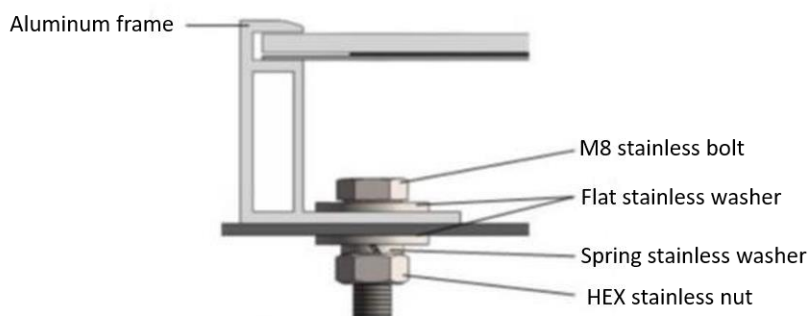
### 6.2.1 SCREW INSTALLATION

The frame of each module has 4- $\phi 9 \times 14$ mm mounting holes, that are ideally placed to optimize the loading capacity to secure the modules on the supporting structure.

To maximize mounting longevity, Trina Solar strongly recommends the use of corrosion proof (stainless steel) fixings.

Secure the module in each fixing location with one M8 bolt, two flat washers, one spring washer and one nut (see Figure 1) and tighten them to a torque of 16-20 N.m (140-180 lbf.in.). The yield strength of bolt and nut should not be less than 450 MPa.

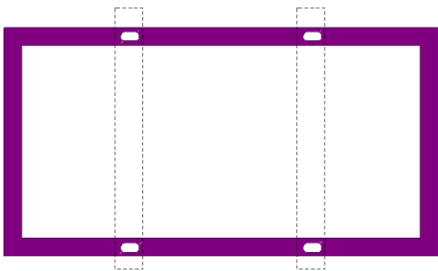
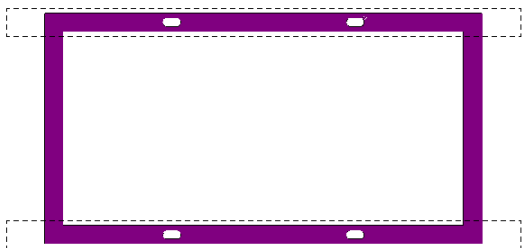
All parts in contact with the frame should use flat stainless-steel washers of a minimum of 1.5 mm (0.06 inch) thickness with an outer diameter of 20-24 mm (0.79-0.94 inch), except for DE09 / DE09.05 / DE09.08 / DEG19C.20 / DE21 using an outer diameter of 16-18 mm (0.63-0.71 inch).



**Figure 1. PV module installed with bolt fitting method.**



The screw should be fixed at the following locations for different installation methods and mechanical loads.

| Module type   | Maximum load  | Module type   | Maximum load  |
|---|---|---|---|
|  <p>Mounting rails run parallel to the short side frame.<br/>Distance between mounting holes is 1400 mm.<br/>Distance between mounting holes is 1100 mm (for DE09/DE09.05/DE09.08 only).</p> |   |  <p>Mounting rails run parallel to the long side frame.<br/>Distance between mounting holes is 1400 mm.</p> |   |
| DE09<br>DE09.05<br>DE09.08  | Uplift load $\leq$ 4000 Pa<br>Downforce load $\leq$ 6000 Pa | DEG18MC.20(II)  | Uplift load $\leq$ 2400 Pa<br>Downforce load $\leq$ 5400 Pa |
| DE18M.08(II)  | Uplift load $\leq$ 2400 Pa<br>Downforce load $\leq$ 6000 Pa | DEG19C.20<br>DEG20C.20<br>DEG21C.20(II)   | Uplift load $\leq$ 2400 Pa<br>Downforce load $\leq$ 3600 Pa |
| DE18M(II)<br>DEG18MC.20(II)<br>DEG19C.20<br>DE19<br>DE20<br>DEG20C.20<br>DE21<br>DEG21C.20  | Uplift load $\leq$ 2400 Pa<br>Downforce load $\leq$ 5400 Pa |   |   |

### 6.2.2 CLAMP INSTALLATION

Trina Solar has tested its modules with a number of clamps from different manufacturers, it is recommended to use fixing bolt of at least M8. The clamp should have length of  $\geq$ 50 mm (1.97 inch) with thickness of  $\geq$ 3 mm (0.12 inch). The clamp shall not be malfunctioned due to deformation or corrosion during the loading process.

The clamp must overlap the module frame by at least 7 mm (0.28 in) but not more than 10 mm (0.39 inch).

Modules clamps should not come into contact with the front glass and must not be deformed.

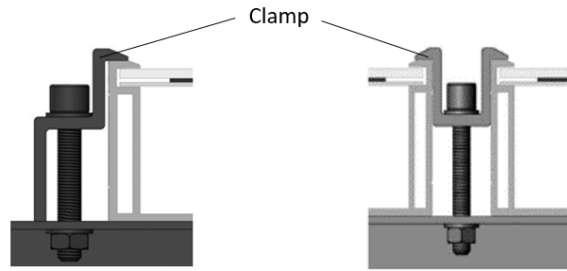
Please make sure to avoid shading effects from the module clamps.

The module frame shall not to be modified under any circumstances.

When choosing clamp installation method, use at least four clamps on each module, two clamps should be attached on each long sides of the module (for portrait orientation). Depending on local wind and snow loads, additional clamps may be required to ensure that modules can bear the extra load.

Applied torque should refer to mechanical design standard according to the bolt customer is using, for example: M8: 16-20 N.m (140-180 lbf.in)

The installation method of clamps is shown in Figure 2.





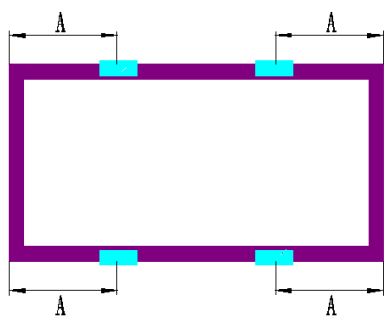
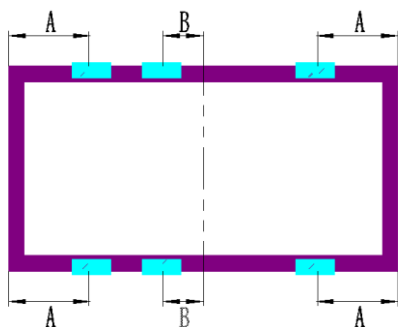
End clamp installation      Middle clamp installation.

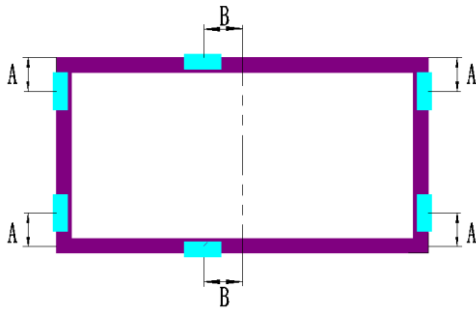
**Figure 2. PV module installed with clamp fitting method.**

Clamp positions are of crucial importance for the reliability of the installation. The clamp centerlines must only be positioned within the ranges indicated in table below, depending on the configurations and loads.

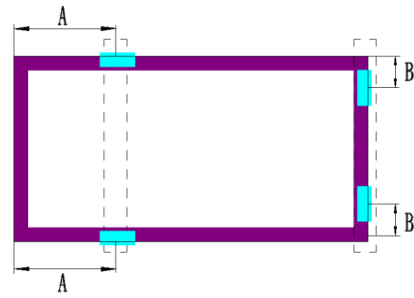
| Module type  | Maximum loads   | Module type   | Maximum loads   |
|--|---|---|---|
| <p>Use 4 clamps on the long side.<br/>Mounting rails run perpendicular to the long side frame.</p> |   | <p>Use 4 clamps on the long side.<br/>Mounting rails run parallel to the long side frame.</p> |   |
| DE09<br>DE09.05<br>DE09.08   | A = (250 - 350) mm<br>Uplift load ≤ 4000 Pa<br>Downforce load ≤ 6000 Pa | DEG18MC.20(II)  | A = (350 - 450) mm<br>Uplift load ≤ 2400 Pa<br>Downforce load ≤ 5400 Pa |
| DE18M(II)<br>DEG18MC.20(II)  | A = (350 - 450) mm<br>Uplift load ≤ 2400 Pa<br>Downforce load ≤ 5400 Pa | DEG19C.20   | A = (440 - 540) mm<br>Uplift load ≤ 2400 Pa<br>Downforce load ≤ 3600 Pa |
| DE19<br>DEG19C.20<br>DE21<br>DEG21C.20   | A = (440 - 540) mm<br>Uplift load ≤ 2400 Pa<br>Downforce load ≤ 5400 Pa | DEG20C.20   | A = (360 - 430) mm<br>Uplift load ≤ 2400 Pa<br>Downforce load ≤ 3600 Pa |
| DE20<br>DEG20C.20  | A = (360 - 430) mm<br>Uplift load ≤ 2400 Pa<br>Downforce load ≤ 5400 Pa | DEG21C.20   | A = (440 - 540) mm<br>Uplift load ≤ 2400 Pa<br>Downforce load ≤ 3600 Pa |

The following installation methods and mechanical loads have been verified by the Trina Solar's National Key Laboratory for PV Science and Technology.

| Module type   | Maximum loads   | Module type  | Maximum loads   |
|---|---|--|---|
|  <p>Use 4 clamps on the short side.<br/>Mounting rails run perpendicular to the long side frame.</p> |   |  <p>Use 4 clamps on the short side.</p>  |   |
| DE09<br>DE09.05<br>DE09.08  | A = (0 - 200) mm<br>Uplift load $\leq$ 2000 Pa<br>Downforce load $\leq$ 2400 Pa   | DE09<br>DE09.05<br>DE09.08   | A = (0 - 200) mm<br>Uplift load $\leq$ 1800 Pa<br>Downforce load $\leq$ 2400 Pa                     |
| DE18M(II)<br>DE18M.08(II)   | A = (0 - 200) mm<br>Uplift load $\leq$ 1000 Pa<br>Downforce load $\leq$ 1200 Pa   | DE18M(II)<br>DE18M.08(II)<br>DEG18MC.20(II)  | A = (0 - 200) mm<br>Uplift load $\leq$ 1000 Pa<br>Downforce load $\leq$ 1300 Pa                     |
| DEG18MC.20(II)  | A = (0 - 200) mm<br>Uplift load $\leq$ 1000 Pa<br>Downforce load $\leq$ 1300 Pa   |  |   |
|  <p>Use 4 clamps on the long side.</p>   |   |  <p>Use 6 clamps on the long side.</p> |   |
| DE09<br>DE09.05<br>DE09.08  | A = (200 - 400) mm<br>Uplift load $\leq$ 3000 Pa<br>Downforce load $\leq$ 3600 Pa<br><br>A = (100 - 200 or 400 - 500) mm<br>Uplift load $\leq$ 2000 Pa<br>Downforce load $\leq$ 2400 Pa | DE09<br>DE09.05<br>DE09.08   | A = (0 - 200) mm<br>B = (0 - 200) mm<br>Uplift load $\leq$ 2400 Pa<br>Downforce load $\leq$ 3600 Pa |
| DE18M(II)<br>DE18M.08(II)<br>DEG18MC.20(II)   | A = (200 - 600) mm<br>Uplift load $\leq$ 1700 Pa<br>Downforce load $\leq$ 1700 Pa   | DE18M(II)<br>DE18M.08(II)  | A = (0 - 200) mm<br>B = (0 - 200) mm<br>Uplift load $\leq$ 1800 Pa<br>Downforce load $\leq$ 2400 Pa |



Use 4 clamps on the short side and 2 clamps on the long side.

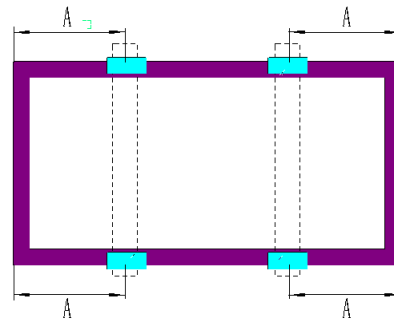


Use 2 clamps on the short side and 2 clamps on the long side.  
Mounting rails run perpendicular to the long side frame.

|                            |   |                            |   |
|----------------------------|---|----------------------------|---|
| DE09<br>DE09.05<br>DE09.08 | A = (0 - 200) mm<br>B = (0 - 200) mm<br>Uplift load ≤ 2400 Pa<br>Downforce load ≤ 3000 Pa | DE09<br>DE09.05<br>DE09.08 | A = (250 - 450) mm<br>B = (100 - 250) mm<br>Uplift load ≤ 1800 Pa<br>Downforce load ≤ 2400 Pa |
| DE18M(II)<br>DE18M.08(II)  | A = (0 - 200) mm<br>B = (0 - 200) mm<br>Uplift load ≤ 1800 Pa<br>Downforce load ≤ 1800 Pa | DE18M(II)<br>DE18M.08(II)  | A = (250 - 450) mm<br>B = (100 - 250) mm<br>Uplift load ≤ 1000 Pa<br>Downforce load ≤ 1200 Pa |
|                            |   | DEG18MC.20(II)             | A = (250 - 450) mm<br>B = (100 - 250) mm<br>Uplift load ≤ 1000 Pa<br>Downforce load ≤ 1300 Pa |




Slide-in rails on the short side.



Use 4 clamps on the long side.  
Mounting rails run perpendicular to the long side frame.

|   |   |                            |  |
|---|---|----------------------------|--|
| DE09<br>DE09.05<br>DE09.08                  | Uplift load ≤ 2000 Pa<br>Downforce load ≤ 2400 Pa | DE09<br>DE09.05<br>DE09.08 | A = (200 - 250 or 350 - 400) mm<br>Uplift load ≤ 3000 Pa<br>Downforce load ≤ 3600 Pa |
| DE18M(II)<br>DE18M.08(II)<br>DEG18MC.20(II) | Uplift load ≤ 1000 Pa<br>Downforce load ≤ 1000 Pa |                            | A = (100 - 200 or 400 - 500) mm<br>Uplift load ≤ 2000 Pa<br>Downforce load ≤ 2400 Pa |

|  |   |   |   |
|--|---|---|---|
|  <p>Use 4 clamps on the short side.<br/>Mounting rails run parallel to the long side frame.</p> |   | / | / |
| DE09<br>DE09.05<br>DE09.08   | A = (150 - 250) mm<br>Uplift load ≤ 2400 Pa<br>Downforce load ≤ 2400 Pa | / | / |
| DE18M(II)<br>DE18M.08(II)  | A = (150 - 250) mm<br>Uplift load ≤ 1000 Pa<br>Downforce load ≤ 1600 Pa | / | / |

### 6.2.3 SINGLE-AXIS INSTALLATION

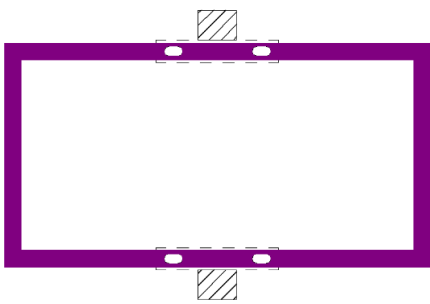
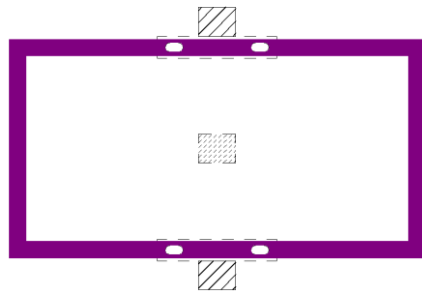
The bolts used in this section is to secure the module in each fixing location with an M6 bolt, two flat washers, a spring washer and a nut, and tighten them to a torque of 16-20 N.m (140-180 lbf.in.).

For Vertex series modules, all parts in contact with the frame should use flat stainless steel washers of minimum 1.5 mm (0.06 inch) thickness with an outer diameter of 16-20 mm (0.63-0.79 inch), except for DEG19C.20 using an outer diameter of 16-18 mm (0.63-0.71 inch).

Trina Solar modules can be used with trackers produced by different manufacturers, please check Appendix A for details.

If the tracker is provided with a bumper and hold hoop, they should be tightening together onto the torque using a hex driver. Please avoid the position of the junction box when installing the bumper.

The module has to be installed on the purlins.

| Module type  | Maximum load                                      | Module type   | Maximum load                                      |
|--|---|---|---|
|  <p>Mounting rails run perpendicular to the long side frame.<br/>Distance between mounting holes is 400 mm.</p> |   |  <p>This installation method is for the tracker with bumper only.<br/>Mounting rails run perpendicular to the long side frame.<br/>Distance between mounting holes is 400 mm.</p> |   |
| DEG18MC.20(II)   | Uplift load ≤ 2400 Pa<br>Downforce load ≤ 2400 Pa | DE18M(II)<br>DEG19C.20  | Uplift load ≤ 2400 Pa<br>Downforce load ≤ 2400 Pa |

\* Please note that the mechanical loads for the above two single-axis installation methods are just regular values, the mechanical loads may different with different trackers, please refer to *Appendix A: Trackers Compatibility* for details.

### 6.3 GROUNDING

All module frames and mounting racks must be properly grounded in accordance with the electrical design and construction specifications, procedures, regulations and other special grounding requirements applicable to the installation sites.

Proper grounding can be achieved by connecting the module frame(s) and all metallic structural components together by using a suitable grounding conductor. The grounding conductors or wires may be copper, alloy, or any other materials that are in accordance with the local electrical design and construction specifications, procedures, and regulations. The ground conductor must be reliably grounded by a suitable ground electrode.

General grounding hardware comes in a package that includes the grounding screw, flat washer, star washer and wire and other relevant hardware should be made of stainless steel.

Do not drill any extra ground holes for convenience, this will void the modules warranty.

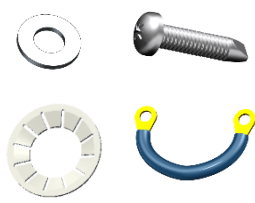
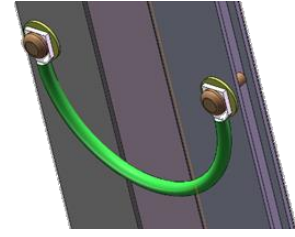
Trina Solar does not provide grounding devices or materials. Any third-party grounding device that meets the requirements of the installation electrical equipment specifications can be used for grounding of Trina Solar’s modules. The grounding device should be installed in accordance with the operating manual prescribed by the manufacturer.

Trina Solar recommends using grounding wires with resistances that are less than 1Ω.

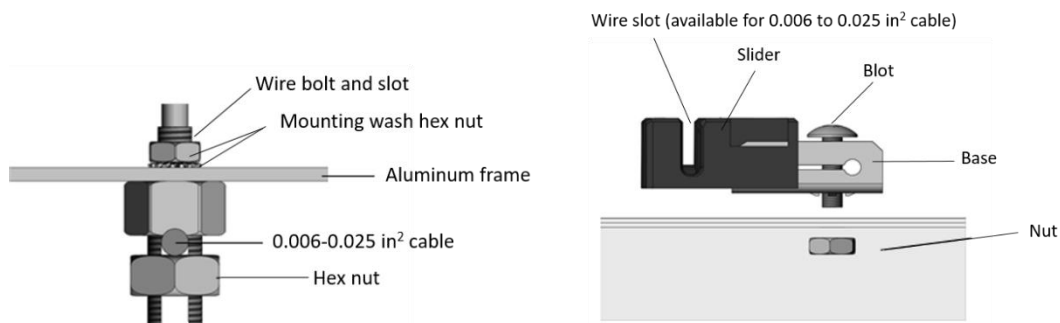
The electrical contact is made by penetrating the anodized coating of the aluminum frame, and tightening the mounting screw (together with the star washer) to the proper torque of 3-7 N.m.

Grounding connections should be installed by a qualified electrician. Connect module frames together using adequate grounding cables: Grounding wire size (4-16 mm<sup>2</sup>/12-6 AWG solid bare copper) should be selected and installed underneath the wire binding bolt. Holes provided for this purpose are identified with a grounding symbol (IEC61730-1). All conductive connection junctions must be firmly fixed.

To avoid lightning strikes and ensure electrical safety, the module frames must be reliably grounded. Grounding between modules can be done using a 4 mm<sup>2</sup> (12 AWG) solid bare copper that connects adjacent ground holes on the module frame (unused installation holes on the frame can also be used for grounding).

| Components  | View  | Connection  |
|---|---|---|
|  |  | <p>Star washer, flat washer, grounding wire are placed in turn, then screwed into the grounding hole to bond the adjacent modules</p> |

Trina Solar recommends using the following two methods for grounding installation, as shown in Figure 3.



**Figure 3. PV module grounding methods (IEC standard).**

## 6.4 ELECTRICAL INSTALLATION

### 6.4.1 SAFETY INSTRUCTION

All wiring installation should be carried out by qualified installers in accordance with local electrical construction codes, procedures, and regulations.

Modules can be connected in series to increase the operating voltage by connecting the positive terminal of one module into the negative terminal of the next one. Before connecting, always ensure that the contacts are corrosion-free, clean, and dry.

The product can be irreparably damaged if an array string is connected in reverse polarity to another. Always verify the voltage and polarity of each string before making a parallel connection. If a reversed polarity or a difference of more than 10V between strings was detected, check the string configuration before connection.

The standard copper cables applied in Trina Solar modules are UV resistant and with a cross-sectional area of  $\geq 4 \text{ mm}^2$  (12 AWG). All other cables applied to connect the DC system should be provided with a similar or larger wire cross section. Trina Solar recommends that all cables are routed in appropriate conduits or rails where water does not accumulate.

The string voltage must not be higher than the maximum system voltage, as well as the maximum input voltage of the inverter and the other electrical devices installed in the system. In order to ensure this, the open circuit voltage of an array needs to be calculated at the lowest expected local ambient temperature, which can be determined using the following formula:

$$\text{Max System Voltage} \geq N \times V_{oc} \times [1 + TC_{VOC} \times (T_{min} - 25)]$$

where

|            |   |
|------------|---|
| N          | Number of modules in series                                       |
| $V_{oc}$   | Open circuit voltage (refer to product label or data sheet)       |
| $TC_{VOC}$ | Thermal coefficient of open circuit voltage (refer to data sheet) |
| $T_{min}$  | The lowest expected environment temperature                       |

The number of modules that can be connected shall be determined by a qualified institution or person in accordance with the design specifications of the photovoltaic system and the local electrical design specifications. The calculation formula recommended by Trina Solar shall be for reference only.

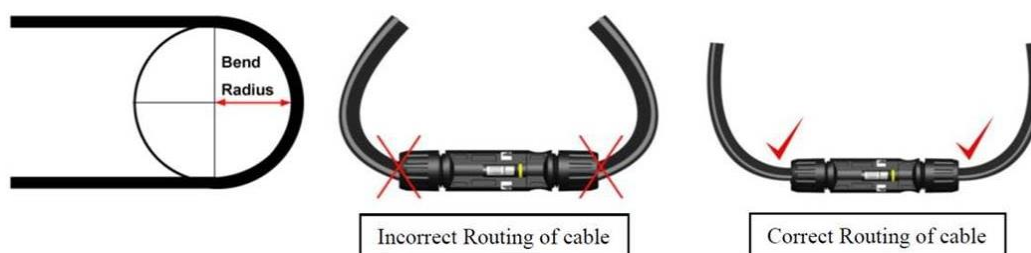
Every module is provided with two standard output cables, and each terminated with a plug-and-play connector. All wiring and electrical connections must be installed in accordance with the electrical design and construction specifications, procedures and regulations at the place of installation.

The minimum and maximum outer diameters of the cable are 5 to 7 mm (0.20 to 0.28 in).

For wiring connections, please use standard PV copper wires with a cross-section area of at least  $4 \text{ mm}^2$  (12 AWG), and should be light-resistant and temperature-resistant at a minimum of  $90 \text{ }^\circ\text{C}$ .



Do not bend the cables less than 43 mm (1.69 inch) radius. PV cables will be damaged if bending radius less than 43 mm.



**Figure 4: The correct routing and minimum bending radius of cables.**

### 6.4.2 WIRING

In order to ensure the normal operation of the system, when connecting the module or loads (such as inverters, batteries, etc.), observe to ensure that the polarity of the cable is connected correctly. If modules are not connected correctly, the bypass diode could be damaged. PV modules can be connected in series to increase the voltage and connected in parallel to increase the current, as shown in Figure 5.

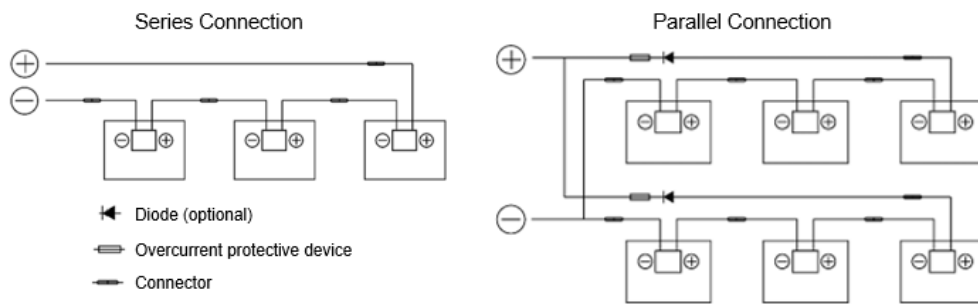
When conducting electrical connection of the modules, please use diagonal pliers to cut the cable tie. When cutting the tie, be careful not to scratch the cable and backsheet. According to the electrical requirements. The positive and negative connectors should be connected in turn, and confirm that you hear a "click" to indicate that the connection is successful. Otherwise, during the operation of the modules, this could lead to electric arc due to poor connections and can burn the connectors.



Before the commissioning and operation of the power station, please check the electrical connection of modules and strings, making sure all connection polarity is correct and the open circuit voltage meets the requirements of the acceptance criteria.

The number of modules in series and in parallel shall be designed reasonably according to the system configuration.

All the above instructions must be followed to meet Trina Solar's warranty conditions.

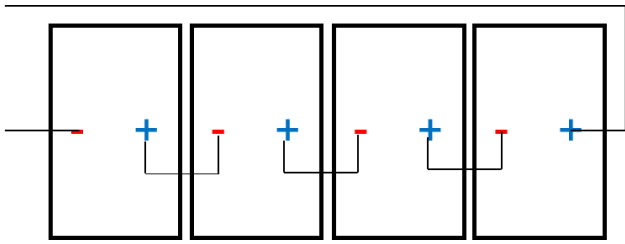
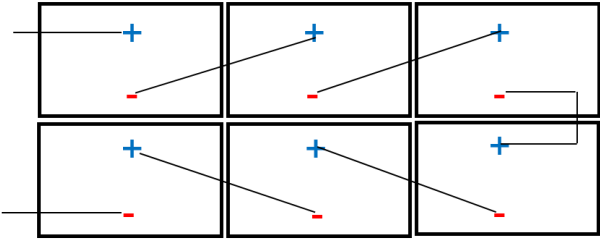


**Figure 5: Series and parallel connection circuit diagram.**

Trina Solar recommends the following two wiring methods for portrait and landscape installations with short and long cable lengths, respectively. For specific standard cable lengths, please refer to the datasheets of the products.

| Recommended Wiring Methods                            | Graphical View   |
|---|--|
| Portrait installation:<br>Standard short cable length | <p style="text-align: center;">(C-type Wiring)</p> <p style="text-align: center;">(Note: One end of the single row needs to be extended)</p> |



|  |   |
|--|---|
| <p>Portrait installation:<br/>Standard short cable length</p>                      |  <p>(Linear Wiring)</p> <p>(Note: One end of the single row needs to be extended)</p> |
| <p>Landscape installation:<br/>Standard long cable length or customized length</p> |   |

### 6.4.3 FUSING

The correction factor of a fuse shall be determined by an authorized professional electrical engineer in accordance with the relevant design regulations and system simulation results. Trina Solar does not responsible for determining the minimum rating of fuse.

The fuse rated current should be chosen depending on different standards, as follows

$$\frac{1.5}{K_f} \cdot I_{SC} \leq I_n \leq \text{Max Series Fuse Rating (IEC standard)}$$

$$\frac{1.56}{K_f} \cdot I_{SC} \leq I_n \leq \text{Max Series Fuse Rating (NEC standard)}$$

where

- $I_n$  Fuse rated current [A]
- $I_{SC}$  Short circuit current of the module [A]
- $K_f$  Temperature correction factor [-]

A correction factor ( $K_f$ ) should be applied for determining the fuse rated current working at different temperatures. Please confirm the final fuse selection with the qualified design institutes and fuse manufacturer. The maximum series fuse rating value on the products' datasheet provided by Trina Solar should be used for reference only.

## 7 PV MODULE MAINTENANCE

### 7.1 VISUAL INSPECTION AND REPLACEMENT

The modules must be inspected and maintained regularly, which is the responsibility of the users. The circuit breaker should be disconnected before the inspection. If the modules are damaged, such as broken glass, broken cables, and damaged junction boxes, it may cause functional and safety failures. If the module is damaged, replace the damaged module with a new module of the same type. Do not touch the live part of the cable or connector.

It is recommended to perform a preventive inspection every six months, and do not replace components of modules without authorization. If electrical or mechanical performance inspection or maintenance is required, it is recommended that qualified professionals should perform the operation to avoid electric shock or personal injury.

The vegetation should be cut regularly to avoid shading and thus affecting the module's performance.

Check if the mounting hardware is tightened correctly in place.

Check whether all string fuses in each non-grounded pole are working properly.

Please cover the front surface of modules with an opaque material during repairing. Modules exposed to sunlight can generate high voltage, which is extremely dangerous.

Trina Solar PV modules are equipped with bypass diodes in the junction box to minimize module heating and current losses.



Before cleaning, make sure to wear PPE, such as insulated protective gloves, protective glasses, hard hats, safety insulated shoes, etc.

When using scaffolding, make sure that the scaffolding is in a stable position or with anti-dumping measures, and that the installer should wear a safety belt in accordance with local building codes.

Do not stand on the modules or trackers for cleaning work.

Do not try to open the junction box to change the diodes even if they fail.

If the module is damaged (broken glass or scratches on the back sheet), it needs to be replaced.

It is necessary to wear cut-resistant gloves and other personal protective equipment for special installations.

Make sure to isolate the impacted array string to prevent the current generation before attempting to remove the module.

Use the relevant disconnect tool provided by the supplier to disconnect the connector of the affected module.

Check the open circuit voltage of the array string and verify that the open circuit voltage of other strings connected in parallel are within a range of 10V difference.

Turn the circuit breaker on again after checking.

Please also pay attention to other safety precautions listed at the beginning of this manual.

### 7.2 CONNECTOR AND CABLE INSPECTION

Inspect all cables to verify that they are firmly connected, avoid direct sunlight, and keep them away from water areas.

It is recommended to check the connectors, torque of bolts, and the general condition of wiring at least once a year. Also, check that mounting hardware is fastened in place. Loose connections will result in damage to the array.

### 7.3 CLEANING

This manual covers the requirements for the cleaning procedures of Trina Solar PV modules. Professional installers should read these guidelines carefully and strictly follow these instructions. Failure to follow these instructions may result in death, injury, or property damage. Damages induced by inappropriate cleaning procedures will void Trina Solar warranty.

The amount of electricity generated by a solar module is proportional to the amount of light captured. A module with shaded cells generate less energy, and therefore, it is essential to keep PV modules clean. The dirt such as bird droppings, leaves, dust is usually need to be cleaned.

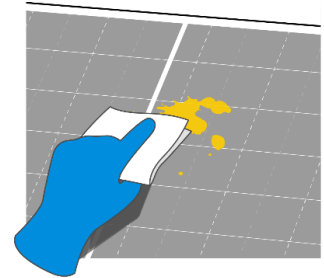
When cleaning the modules, make sure that the temperature difference between the water and the module is in the range of  $-5^{\circ}\text{C}$ - $10^{\circ}\text{C}$ .

Use a dry or wet, soft and clean cloth, sponge, or soft bristled brush to wipe the photovoltaic module. Please make sure that the cleaning tools do not wear out glass, EPDM, silicon, aluminum alloys or steel.

If there is greasy dirt or other substances which are difficult to clean, conventional household glass cleaning agents can be used. Pay attention not to use alkaline and strong acidic solvents, including hydrofluoric acid, alkali, acetone.

For modules that are installed horizontally ( $0^{\circ}$  tilt angle), they should be cleaned more frequently, as they do not have "self-cleaning" function as those installed at  $10^{\circ}$  or larger tilt angles.

The back surface of the monofacial module usually does not need to be cleaned. When cleaning the back of the bifacial module, avoid any sharp objects that may cause damage or penetrate the base material. The other cleaning requirements are the same as the front-side.



Cleaning activities create risk of damaging the modules and array components, as well as increasing the potential electric shock hazard.

Do not clean the modules during the hottest time of the day to avoid thermal stress on the modules.

Cracked or broken modules represent an electric shock hazard due to leakage currents, and the risk of shock is increased when modules are wet. Before cleaning, thoroughly inspect modules for cracks, damage, and loose connections.

During the daylight, the voltage and current present in the array are sufficient to cause a fatal electric shock.

Please make sure that the array has been disconnected from other active components before starting the cleaning.

Wear suitable protective clothing (clothes, insulating gloves, etc.) when cleaning the modules.

Do not immerse the module, partially or totally, in water or any other cleaning solutions.

Do not use such as lubricants and organic solvents to clean the connectors.

Do not clean modules under the weather conditions of wind more than 4 class (in Beaufort scale), heavy rain or heavy snow.

When cleaning the modules, it is forbidden to step on the modules, forbidden the injection of water to the backside of the modules or cables. Please ensure that the connectors are clean and dry to prevent electric shock and fire hazards.

Do not use steam cleaner.

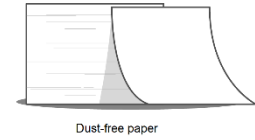
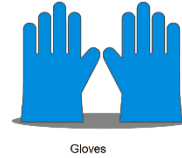
For detailed requirements regarding cleaning, please refer to *White Paper for PV Modules Operation and Maintenance*, available from <https://www.trinasolar.com/en-glb/resources/downloads>.

## CLEANING METHODS

### Method A: Compressed water

Requirement for water quality:

- PH: 5 ~7;
- Chloride and Salinity: 0 - 3,000 mg/L
- Turbidity: 0-30 NTU
- Conductivity: 1500~3000  $\mu\text{s}/\text{cm}$
- Total dissolved solids (TDS):  $\leq 1000$  mg/L
- Water hardness (calcium and magnesium ions): 0-40 mg/L
- Non-alkaline water must be used; demineralized water shall be used when conditions are available
- The maximum water pressure recommended is 4 MPa (40 bar)



### Method B: Compressed Air

Trina Solar recommends using this method to clean the soft dirt (like dust) on modules. This technique can be applied as long as the method is efficient enough to clean the modules considering the on-site conditions.

### Method C: Wet cleaning

If excessive soiling is present on the module surface, a non-conductive brush, sponge, or other mild agitating method may be used with caution.

Please make sure that any brushes or agitating tools are constructed with non-conductive materials to minimize risk of electric shock and that they are not abrasive to the glass or the aluminum frame.

If grease is present, an environmentally friendly cleaning agent may be used with caution.

### Method D: Cleaning robot

If a cleaning robot is used for dry cleaning, the brush material is required to be soft plastic material, and the glass surface and aluminum alloy frame of the module will not be scratched during the cleaning process and after cleaning. The weight of the cleaning robot should not be too large. If the cleaning robot is improperly used, and the resulting module damage and power attenuation are not covered by Trina Solar's warranty.

## TROUBLE SHOOTING

If your PV system does not work normally after installation, please inform your installer immediately. It is recommended to perform preventive inspections every six months, and do not change the components of the modules without authorization. If electrical or mechanical performance inspection or maintenance is required, they should be operated by qualified professionals to avoid any electric shock or personal injury.

## 8 REPORTING TECHNICAL ISSUES AND CLAIMS

- Contact your installer.
- Contact Trina Solar after sales service team at <http://customerservice.trinasolar.com/>.
- Submit the Customer Feedback Form at: <http://customerservice.trinasolar.com/> and one of our technical service representatives will contact you within 5 business days. A username and password is required to send feedback from the customer service link.
- For module specifications or datasheets, please download from: <http://www.trinasolar.com/>.

### AMENDED EDITIONS AND DATES

- Document No. UM-M-0002, Version A, released in April 2021.
- Document No. UM-M-0002, Version B, released in June 2021.

## APPENDIX A: TRACKERS COMPATIBILITY

The following tracker manufacturers and types are approved with Trina Solar modules.

| Module type                 | Tracker Company                  | Tracker type  | Maximum Load                                      |
|-----------------------------|----------------------------------|---|---|
| DEG19C.20                   | Trina Solar Co., Ltd.            | Vanguard™<br>(400 mounting holes position)                                  | Uplift load ≤ 1800 Pa<br>Downforce load ≤ 1800 Pa |
| DEG19C.20                   | Nextracker Inc.                  | NXH & NX100<br>Short Rail V2.4<br>(400 mounting holes position)             | Uplift load ≤ 1800 Pa<br>Downforce load ≤ 1800 Pa |
| DEG18MC.20(II)<br>DEG21C.20 | Nextracker Inc.                  | NXH & NX100<br>Short Rail V2.4<br>(400 mounting holes position)             | Uplift load ≤ 2400 Pa<br>Downforce load ≤ 2400 Pa |
| DE18M(II)<br>DEG19C.20      | Nextracker Inc.                  | NXH & NX100<br>Short Rail V2.4<br>(400 mounting holes position with bumper) | Uplift load ≤ 2400 Pa<br>Downforce load ≤ 2400 Pa |
| DEG18MC.20(II)<br>DEG19C.20 | Array Technologies Inc.          | DuraTrack HZ v3<br>(300 mm purlin)  | Uplift load ≤ 1400 Pa<br>Downforce load ≤ 1400 Pa |
| DEG18MC.20(II)              | Array Technologies Inc.          | DuraTrack HZ v3<br>(400 mm purlin)  | Uplift load ≤ 1500 Pa<br>Downforce load ≤ 1500 Pa |
| DEG19C.20                   | Array Technologies Inc.          | DuraTrack HZ v3<br>(400 mm purlin)  | Uplift load ≤ 1600 Pa<br>Downforce load ≤ 1600 Pa |
| DEG18MC.20(II)<br>DEG19C.20 | Array Technologies Inc.          | DuraTrack HZ v3<br>(600 mm purlin)  | Uplift load ≤ 2400 Pa<br>Downforce load ≤ 2400 Pa |
| DEG18MC.20(II)              | Array Technologies Inc.          | Skyline<br>(400 mm mounting holes position)                                 | Uplift load ≤ 2400 Pa<br>Downforce load ≤ 2400 Pa |
| DEG19C.20                   | Arctech Solar Holdings Co., Ltd. | Skyline<br>(400 mm mounting holes position)                                 | Uplift load ≤ 2100 Pa<br>Downforce load ≤ 2100 Pa |
| DEG19C.20                   | GameChange Solar LP              | GENIUS TRACKER™ 1P<br>(400 mm purlin)                                       | Uplift load ≤ 1800 Pa<br>Downforce load ≤ 1800 Pa |
| DEG18MC.20(II)              | PV HARDWARE SOLUTIONS, S.L.U     | Monoline™<br>(400 mm mounting holes position)                               | Uplift load ≤ 2400 Pa<br>Downforce load ≤ 2400 Pa |
| DEG19C.20                   | PV HARDWARE SOLUTIONS, S.L.U     | Monoline™<br>(400 mm mounting holes position)                               | Uplift load ≤ 1800 Pa<br>Downforce load ≤ 1800 Pa |
| DEG19C.20                   | Soltigua                         | (400 mm mounting holes position)  | Uplift load ≤ 1800 Pa<br>Downforce load ≤ 1800 Pa |
| DEG18MC.20(II)<br>DEG19C.20 | IDEEMATEC Deutschland GmbH       | H4PLUS™<br>(400 mm mounting holes position)                                 | Uplift load ≤ 1200 Pa<br>Downforce load ≤ 1200 Pa |

**NOTICE:** All losses due to design changes or installation errors by the tracker manufacturers are not covered by Trina Solar warranty.



天合光能有限公司

江苏省常州市新北区天合光伏园·天合路 2 号

Trina Solar Co., Ltd.

2 Tianhe Road, Tianhe Photovoltaic Industrial Park, Xinbei District

Changzhou City, Jiangsu Province, China.



400 988 0000

解释权归天合光能有限公司所有

The Right Of Final Interpretation Belongs To Trina Solar